

Renard SS16 Board Assembly

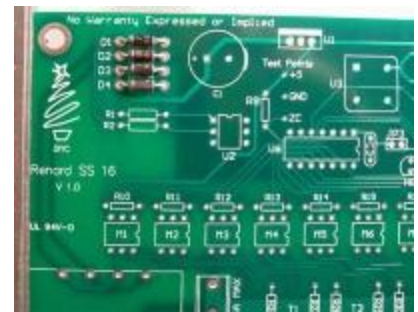
The following sequence of steps is by no means the only way to assemble the Renard SS16. It is simply a suggested order of events to achieve the desired goal.

NOTE: The part numbers referenced in the following instructions are those taken from the [Renard SS16 BOM](#).

- **1** - Start by checking the PCB over for any obvious production faults. Check for traces that end abruptly or have cracks/breaks in them. Also check that all holes are clear.



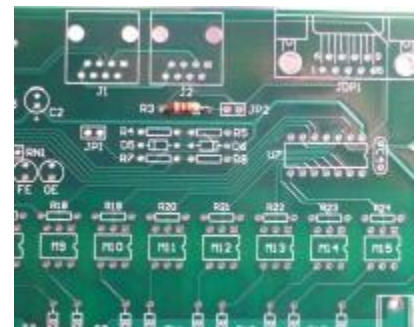
- **2** - Install four diodes D1 thru D4 (PN# 625-1N5817-E3). The diodes will have a silver/grey stripe on a black body. Make sure that this stripe lines up with the stripe on the PCB silk screen (to the left).



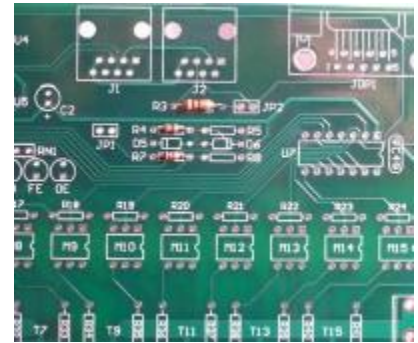
- **3** - Install two 750 ohm resistors R1 & R2 (PN# 291-750-RC). Make sure that the resistors have a value of 750 ohms (violet/green/brown/gold stripes). These resistors have no polarity to worry about.



- **4** - Install the 120 ohm resistor R3 (PN# 291-120-RC). Make sure that the resistor has a value of 120 ohms (brown/red/brown/gold stripes). This resistor has no polarity to worry about.



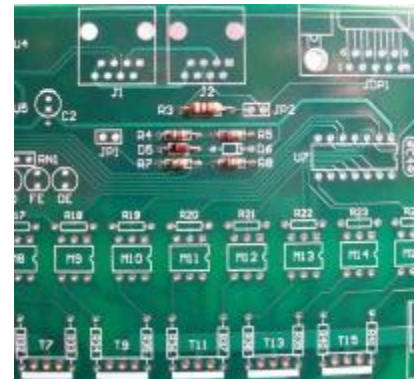
- **5** - Install two 1K ohm resistors R4, R7 (PN# 299-1K-RC). Make sure that the resistors have a value of 1K ohm (brown/black/red/gold stripes). These resistors have no polarity to worry about.



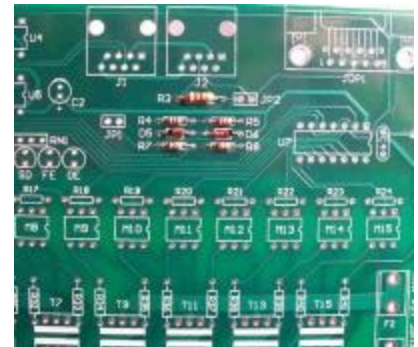
- **6** - Install three 27K ohm resistors R5, R8, R9 (PN# 299-27K-RC). Make sure that the resistors have a value of 27K ohms (red/violet/orange/gold stripes). These resistors have no polarity to worry about.



- **7** - Install zener diode D5 (PN# 78-1N5229B). The diode must be installed correctly. The diode should have a black stripe on the orange/red body. Make sure that this stripe lines up with the stripe on the PCB silkscreen (to the left).



- **8** - Install zener diode D6 (PN# 78-1N5239B). The diode must be installed correctly. The diode should have a black stripe on the orange/red body. Make sure that this stripe lines up with the stripe on the PCB silkscreen (to the right).



- **9** - Install 17 680 ohm resistors R6, R10 thru R25 (PN# 299-680-RC). Make sure that the resistors have a value of 680 ohms (blue/grey/brown/gold stripes). These resistors have no polarity to worry about.



- **10** - Install 16 180 ohm resistors R26 thru R41 (PN# 291-180-RC). Make sure that the resistors have a value of 180 ohms (brown/grey/brown/gold stripes). These resistors have no polarity to worry about.



- **11** - Install two 0.1uF capacitors C3, C4 (PN# 80-C322C104K5R). These capacitors have no polarity to worry about.



INSTALLATION NOTE:

The following resistor network is a "bussed" type resistor network. This means that the five resistor components (pins 2-6) are all connected in a common buss to pin 1. Installing the resistor network backwards will cause a multitude of malfunctions. So please take the time to make sure it is installed correctly.

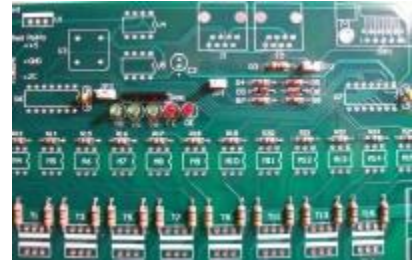
- **12** - Install the 330 ohm resistor network RN1 (PN# 264-330-RC). The resistor network should have a dot on it to indicate pin 1. Insert pin 1 of the resistor network into the square solder pad (to the left).



- **13a** - Install four green LEDs PWR (D7), HB, ZC & SD (PN# 604-WP710A10GT). The LEDs are polarized and must be installed correctly. The short lead is the cathode and must be placed in the square solder pad.
- **13b** - Install two red LEDs FE & OE (PN# 604-WP710A10IT). The LEDs are polarized and must be installed correctly. The short lead is the cathode and must be placed in the square solder pad.



- **14** - Install three 2-pin vertical headers JP1, JP2 & JP3 (PN# 538-22-03-2021). These headers have no polarity to worry about.



- **15** - Install the clock oscillator U3 (PN# 815-ACH-18.432-EK). The oscillator must be installed in the correct orientation. The oscillator has three rounded corners and one squared corner, make sure that the squared corner is positioned to match the PCB silkscreen (upper left corner).



- **16** - Install the voltage regulator U1 (PN# 511-LF50CV). The voltage regulator must be installed correctly. The voltage regulator's tab/heat sink must be aligned with the wider line of the PCB silkscreen outline (facing towards the PCB top edge).



- **17** - Install the 2200uF capacitor C1 (PN# 140-REA222M1CBK1320P). This capacitor is polarized and must be installed correctly. The capacitor should have a black stripe on the body to indicate which lead is negative. The positive lead of the capacitor will be the longer lead. Make sure that the positive lead is placed in the square solder pad.



- **18** - Install the 47uF capacitor C2 (PN# 140-REA470M1CBK0511P). This capacitor is polarized and must be installed correctly. The capacitor should have a silver/grey stripe on the body to indicate which lead is negative. The positive lead of the capacitor will be the longer lead. Make sure that the positive lead is placed in the square solder pad.



- **19** - Install four fuse clips (PN# 534-3517). **Note: they are directional for proper fit of the fuse.** A helpful installation tip here would be to put a fuse in the clips when you position them in their mounting holes. This will help keep them correctly aligned so that the fuse will fit properly.



INSTALLATION NOTE:

Pin 1 of the following IC sockets must be aligned with the square solder pad. Another way to verify that you installed them correctly is to make sure that the notch on the socket is aligned with the notch on the PCB silkscreen outline.

- **20** - Install two 8-pin IC sockets for U4 & U5 (PN# 571-1-390261-2).



- **21** - Install two 14-pin IC sockets for U6 & U7 (PN# 571-1-390261-3).



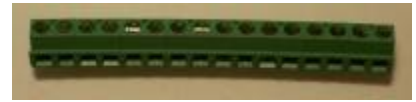
- **22** - Install 17 6-pin IC sockets for U2, M1 thru M16 (PN# 571-1-390261-1).



- **23** - Install 16 triacs T1 thru T16 (PN# 511-BTA06-600CW). The triacs must be installed correctly. The triac tab/heat sink must be aligned with wider line of the PCB silkscreen outline. The tab/heat sink of the odd numbered triacs will facing the even numbered triacs and vice versa.



- **24** - Install 16 terminal blocks for Ch1 thru Ch16 (PN# 571-2828372). These terminal blocks have a small interlocking tab that allows the terminals to be "stacked" together to create a larger terminal block. It is easier to go ahead and "stack" eight terminal blocks together first and then mount them on the PCB.



- **25** - Install two terminal blocks for 120V input (PN# 571-7969492).



- **26** - Install the transformer TF1 (PN# 838-3FS-312).



- **27** - Install two RJ45 modular jacks J1 & J2 (PN# 571-5556416-1). Due to minor variations in manufacturing, some RJ45 jacks are a tighter fit than others. Care should be taken to ensure that the pins are aligned first before applying too much pressure to seat the locking lugs through the board.



- **28** - Install the DE9 connector JDP1 (PN# 152-3409).



If you are unsure about your ability to build this board, then you should go to [The Beginner's Setup Guide](#) at this point. [The Beginner's Setup Guide](#) will walk you thru some initial tests to make sure that everything is working correctly before inserting the IC chips.

INSTALLATION NOTE:

Pin 1 of each IC must be aligned with pin 1 of the corresponding socket. This can be verified by noting that the notch on the IC is aligned with the notch on the socket.

- **29** - Install the H11AA1 optocoupler U2 (PN# 782-H11AA1).



- **30** - Install two PIC microcontrollers U6 & U7 (PN# 579-PIC16F688-I/P). The PICs need to be programmed with the appropriate firmware before installation. More info on programming PICs can be found [here](#).



- **31** - Install two RS232/RS485 Interface ICs U4 & U5 (PN# 511-ST485BN).



- **32** - Install 16 optoisolators M1 thru M16 (PN# 859-MOC3023).



NOTE: The optoisolators are too small to have a notch to use as an alignment guide. Pin 1 is usually notated by a white dot next to it.

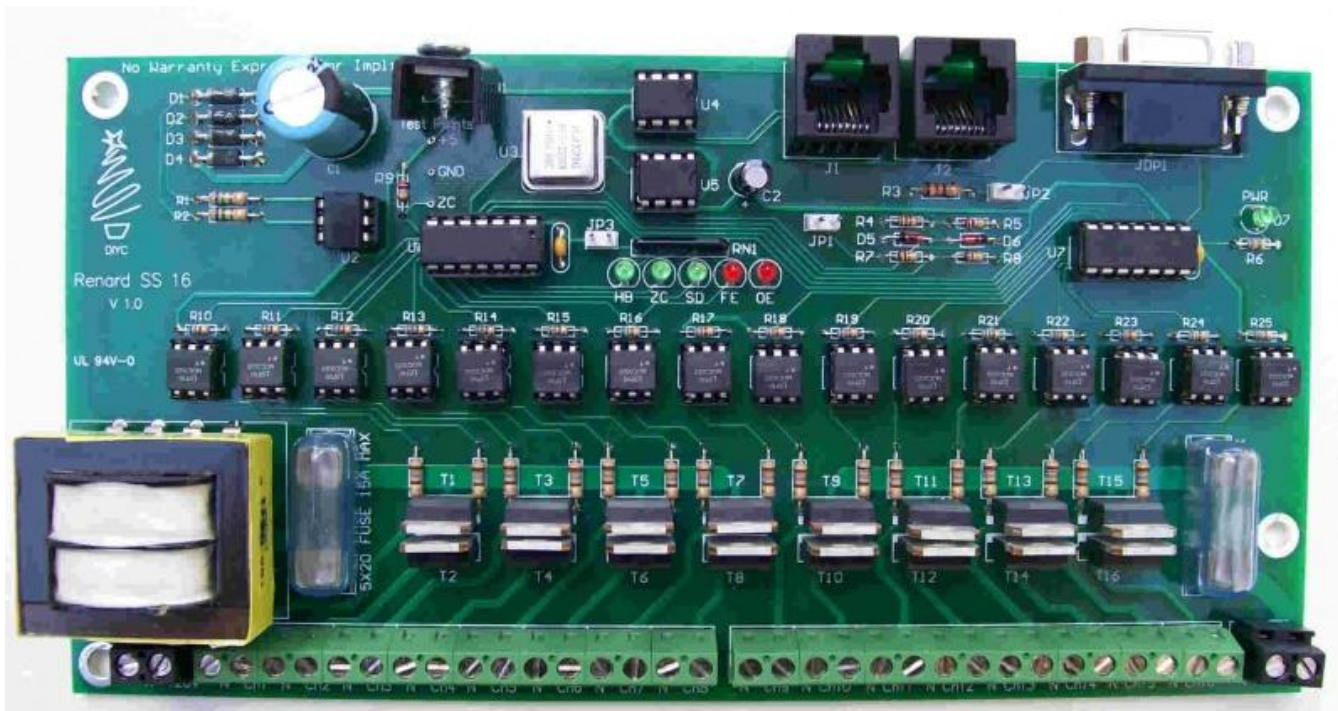
- **33** - Install the heat sink (PN# 532-577102B00) on voltage regulator U1. The mounting hardware and heat transfer compound are not included in the BOM since any common hardware can be used to attach the heat sink. If you don't have any heat transfer compound handy, you can use something like PN# 532-249. In the picture the heat sink is attached using a #4-40 x 3/8" machine screw and nut found at home depot.



- **34** - Install two fuses (PN# 504-GMA-10) and two fuse covers (PN# 534-3527C).



Completed Renard SS16



Congratulations! You have finished building your Renard SS16!

RENARD SS16 ASSEMBLY CHECKLIST

- | | |
|--------------------------|---|
| <input type="checkbox"/> | 1 - Check the PCB |
| <input type="checkbox"/> | 2 - Install four diodes D1 thru D4 (PN# 625-1N5817-E3) |
| <input type="checkbox"/> | 3 - Install two 750 ohm resistors R1 & R2 (PN# 291-750-RC) |
| <input type="checkbox"/> | 4 - Install the 120 ohm resistor R3 (PN# 291-120-RC) |
| <input type="checkbox"/> | 5 - Install two 1K ohm resistors R4, R7 (PN# 299-1K-RC) |
| <input type="checkbox"/> | 6 - Install three 27K ohm resistors R5, R8, R9 (PN# 299-27K-RC) |
| <input type="checkbox"/> | 7 - Install zener diode D5 (PN# 78-1N5229B) |
| <input type="checkbox"/> | 8 - Install zener diode D6 (PN# 78-1N5239B) |
| <input type="checkbox"/> | 9 - Install 17 680 ohm resistors R6, R10 thru R25 (PN# 299-680-RC) |
| <input type="checkbox"/> | 10 - Install 16 180 ohm resistors R26 thru R41 (PN# 291-180-RC) |
| <input type="checkbox"/> | 11 - Install two 0.1uF capacitors C3, C4 (PN# 80-C322C104K5R) |
| <input type="checkbox"/> | 12 - Install the 330 ohm resistor network RN1 (PN# 264-330-RC) |
| <input type="checkbox"/> | 13a - Install four green LEDs PWR, HB, ZC & SD (PN# 604-WP710A10GT) |
| <input type="checkbox"/> | 13b - Install two red LEDs FE & OE (PN# 604-WP710A10IT) |
| <input type="checkbox"/> | 14 - Install three 2-pin vertical headers JP1, JP2 & JP3 (PN# 538-22-03-2021) |
| <input type="checkbox"/> | 15 - Install the clock oscillator U3 (PN# 815-ACH-18.432-EK) |
| <input type="checkbox"/> | 16 - Install the voltage regulator U1 (PN# 511-LF50CV) |
| <input type="checkbox"/> | 17 - Install the 2200uF capacitor C1 (PN# 140-REA222M1CBK1320P) |

RENARD SS16 ASSEMBLY CHECKLIST
(continued)

- | | |
|--------------------------|--|
| <input type="checkbox"/> | 18 - Install the 47uF capacitor C2 (PN# 140-REA470M1CBK0511P) |
| <input type="checkbox"/> | 19 - Install four fuse clips (PN# 534-3517) |
| <input type="checkbox"/> | 20 - Install two 8-pin IC sockets for U4 & U5 (PN# 571-1-390261-2) |
| <input type="checkbox"/> | 21 - Install two 14-pin IC sockets for U6 & U7 (PN# 571-1-390261-3) |
| <input type="checkbox"/> | 22 - Install 17 6-pin IC sockets for U2, M1 thru M16 (PN# 571-1-390261-1) |
| <input type="checkbox"/> | 23 - Install 16 triacs T1 thru T16 (PN# 511-BTA06-600CW) |
| <input type="checkbox"/> | 24 - Install 16 terminal blocks for Ch1 thru Ch16 (PN# 571-2828372) |
| <input type="checkbox"/> | 25 - Install two terminal blocks for 120V input (PN# 571-7969492) |
| <input type="checkbox"/> | 26 - *Install the transformer TF1 (PN# 838-3FS-312) |
| <input type="checkbox"/> | 27 - Install two RJ45 modular jacks J1 & J2 (PN# 571-5556416-1) |
| <input type="checkbox"/> | 28 - Install the DE9 connector JDP1 (PN# 152-3409) |
| <input type="checkbox"/> | 29 - Install the H11AA1 optocoupler U2 (PN# 782-H11AA1) |
| <input type="checkbox"/> | 30 - Install two PIC microcontrollers U6 & U7 (PN# 579-PIC16F688-I/P) |
| <input type="checkbox"/> | 31 - Install two RS232/RS485 Interface ICs U4 & U5 (PN# 511-ST485BN) |
| <input type="checkbox"/> | 32 - Install 16 optoisolators M1 thru M16 (PN# 859-MOC3023) |
| <input type="checkbox"/> | 33 - Install the heat sink (PN# 532-577102B00) on voltage regulator U1 |
| <input type="checkbox"/> | 34 - Install two fuses (PN# 504-GMA-10) and two fuse covers (PN# 534-3527C) |